

USITT – ASTC 2019 COMPETITION

EMERSON COLLEGE:

TYLER ERICSON

JONAH FREE

RYAN HEALEY

DAN KARLIN

JACKSON LASSETER

EMERSON COLLEGE AND ITS NEEDS

- Emerson college has six MainStage theaters, ten full sized rehearsal spaces, a fully equipped costume shop, a 3,000 square foot Scene shop, and a 2,050 square foot Paint deck. These spaces are reserved exclusively for the use of our curricular producing company Emerson Stage and professional presenting company ArtsEmerson.
- Emerson currently has over 20 active student performance groups producing everything from dance and vocal pieces, to standup and sketch comedy, to full scale theatrical productions. These student groups are not afforded the same access to the facilities that are available to the colleges main producing and presenting companies.
- The only space available specifically for the use of student groups on campus, known as “The Cabaret Theater,” is constantly unavailable due to high demand and has extremely limited capabilities compared to Emerson’s other spaces. Student groups are subjected to rehearsal space availability disputes, an inability to reserve performance spaces, and having to build entire sets in their own backyards since there is nowhere else for them to do it.



MISSION STATEMENT

To meet the needs of the underserved student population at Emerson by transforming and updating a medium-sized meeting space into an intimate 80-seat performance venue, accessible to the many student groups active at Emerson College, fostering an environment suited to collaborative creation.

By reconfiguring the architecture and layout of the existing meeting space - the former banking floor of the Union Bank building - as well as creating ancillary support spaces on the level immediately below grade and the two levels above ground, this project aims to provide the student groups of Emerson College with a stand-alone center for the design, facilitation, and implementation of student-produced theatre and entertainment.

ADAPTIVE REUSE:

THE UNION BANK
BUILDING,

216 TREMONT STREET
BOSTON, MA.

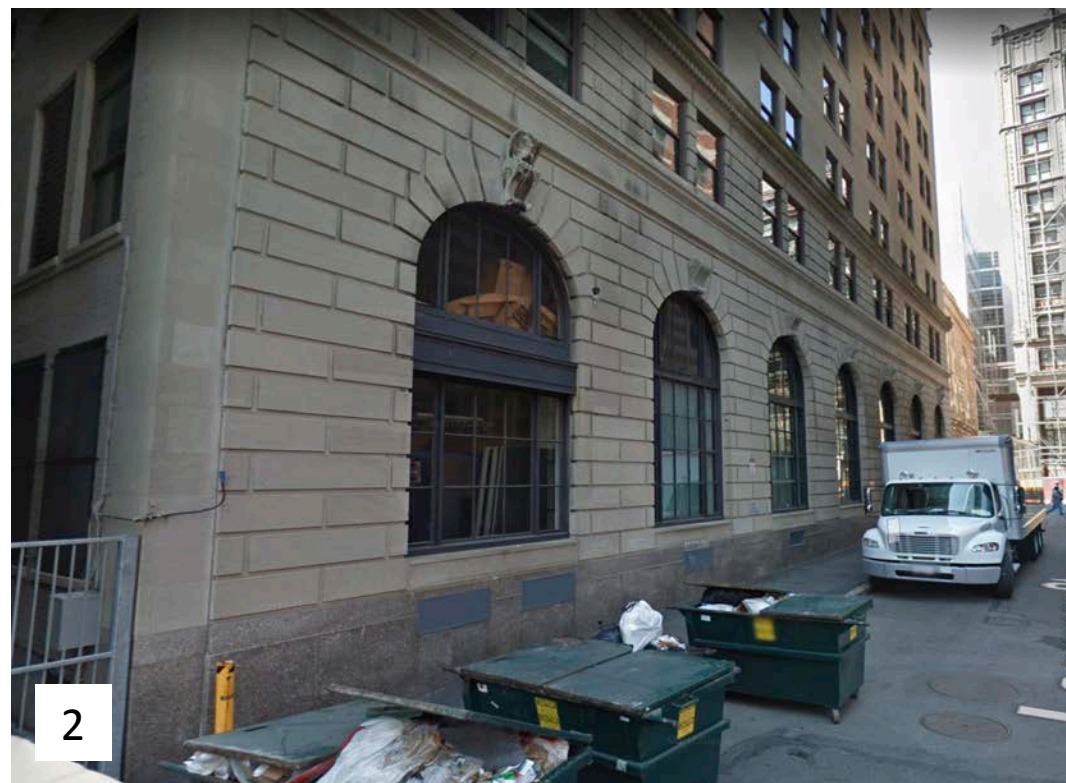
Constructed in 1925, the building was formerly owned by the Union Savings Bank. It was acquired by Emerson College in 1997. It is now the home to the Center for Health and Wellness, the Counseling Center, Career Services, Academic Advising, International Student Affairs, the Office of the Registrar and the Writing and Academic Resource Center. The first floor contains the Bill Bordy Theater and Auditorium, which is used by the college for lectures, performances, conferences and special events.

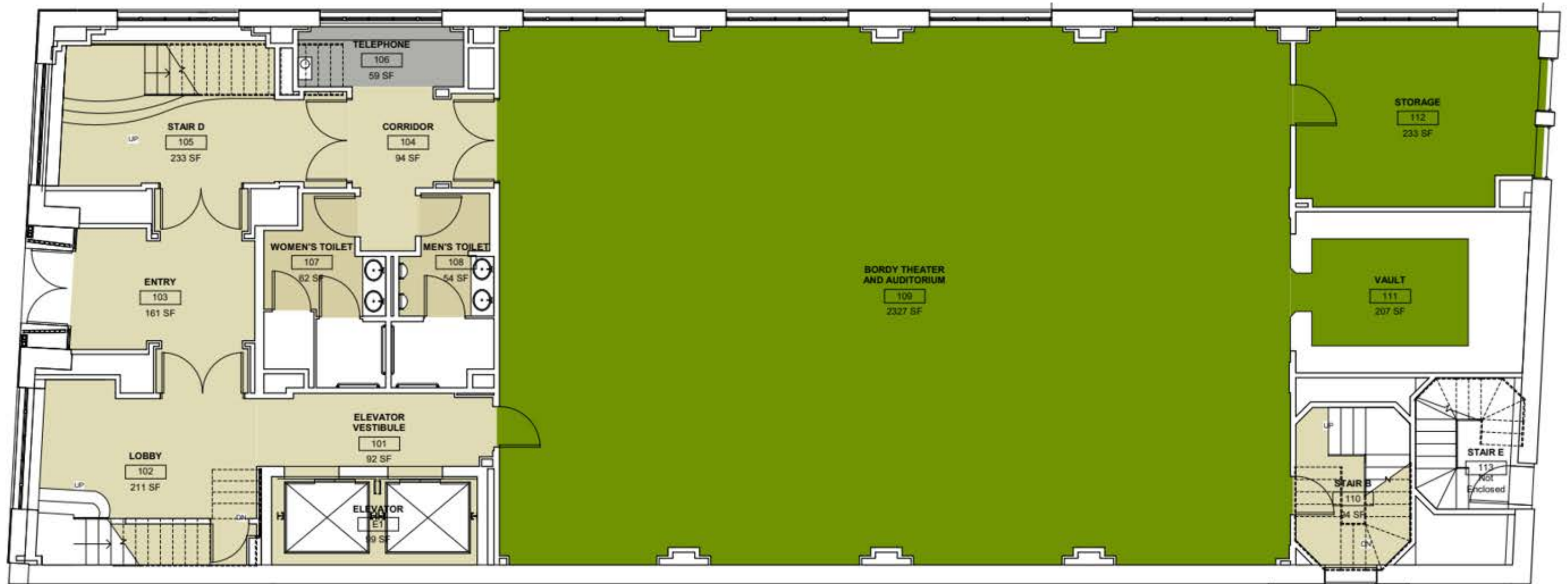
BILL BORDY RENOVATION GOALS

- Relocation of the main entrance of the performance space from the front of the building to the rear to both separate the venue capabilities of the building from its administrative function, and provide the new student-run venue its own identity distinct from the other spaces at Emerson College, namely the Cutler Majestic Theater, which is across the street from the proposed venue.
- Installation of a lighting grid to facilitate the implementation of lighting designs in the space.
- Installation of a trap system for easy staging and reconfiguration.
- Addition of scene shop, costume construction studio, and design studio to support the preproduction and implementation of shows within the space.
- Student-only rehearsal studios to increase the - currently scarce - rehearsal spaces on campus
- Storage for incoming and outgoing shows, allowing for smooth transitions between load ins/outs.
- Loading space and storage on the performance level for quick and easy truck/van unloading (large doors, no truck dock).

Exterior Site Photos

1. View from Tremont St. and Lagrange St.
2. Rear view of building
3. Building entrance

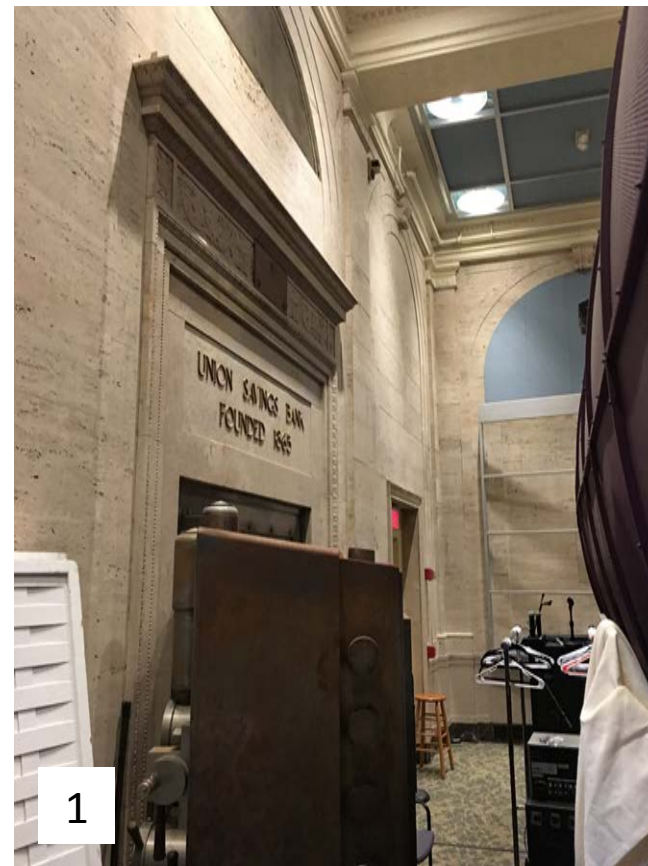


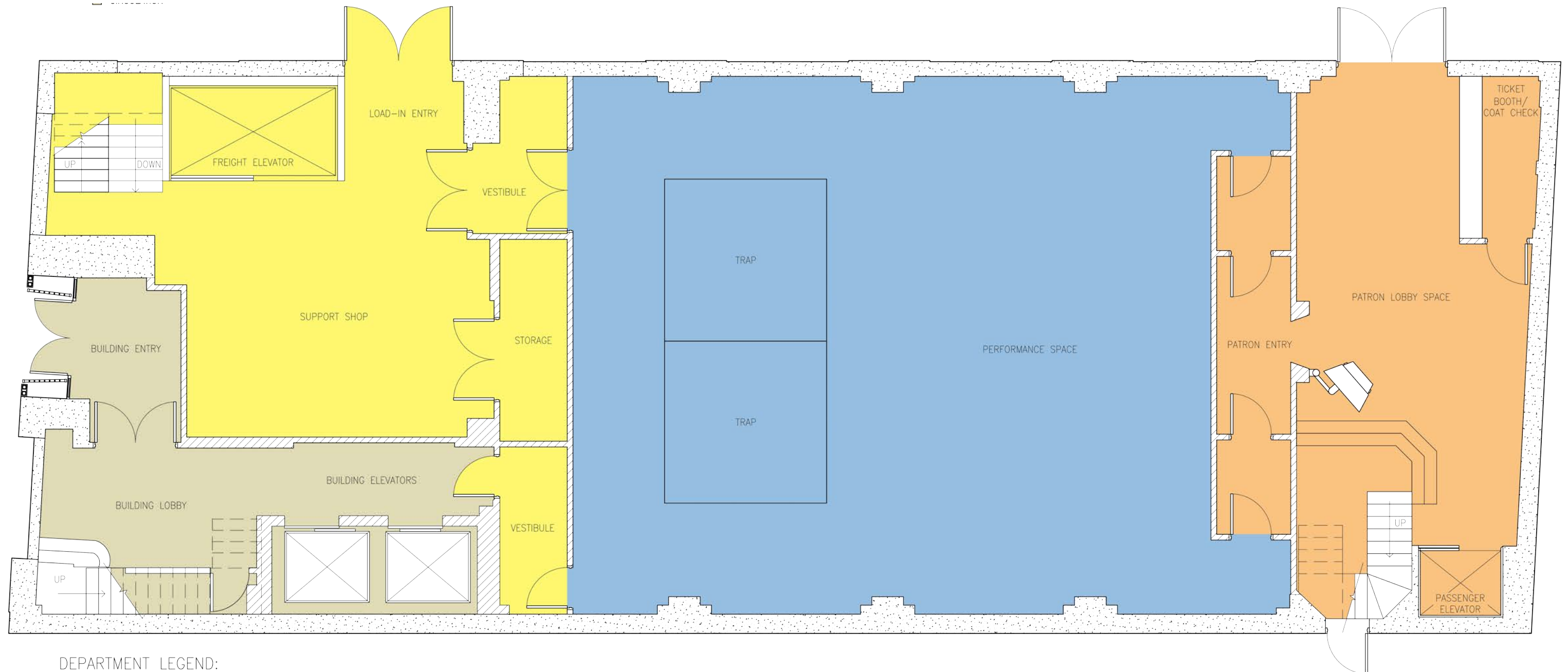


UNION BANK BUILDING FIRST FLOOR (BEFORE)

Interior Site Photos

1. Vault Exterior Entrance
2. Vault Door
3. Lobby of Interior Space
4. Mezzanine Level Balcony
5. Room Interior
6. Projections Screen (Vault Door Behind)



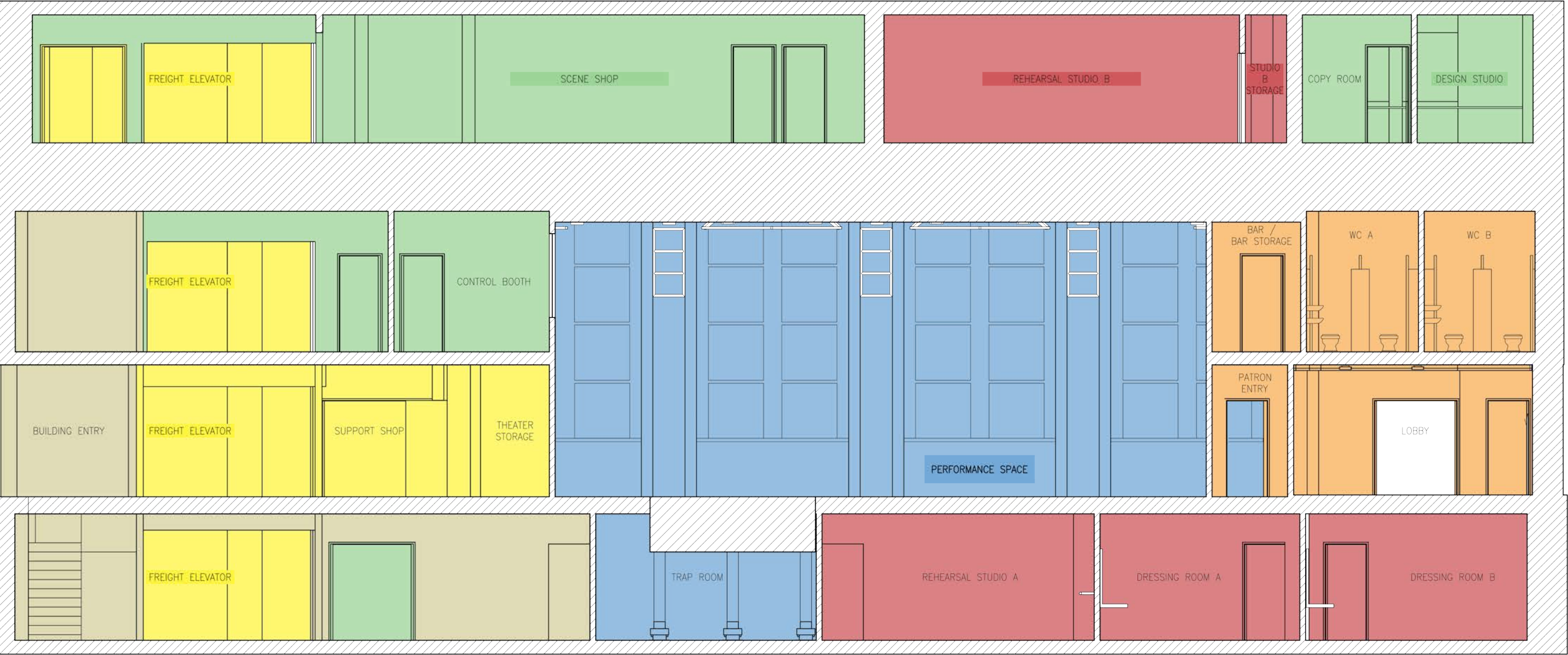


DEPARTMENT LEGEND:

- LOBBY / PUBLIC SPACE
- PERFORMANCE SPACE
- LOADING / STAGING SPACE
- COMPANY SUPPORT
- TECHNICAL SUPPORT
- CIRCULATION

UNION BANK BUILDING FIRST FLOOR (AFTER)

- Full sized lobby with ticket and coat check booth and passenger elevator to mezz level lobby
- Entrance vestibules on either side of the theater
- Trap system in space to accommodate different theater staging options
- Theater leads into a backstage support shop area with a storage closet for theater
- Load-in entry leads into the backstage support shop and into the freight elevator
- Stairs next to the freight elevator going to both Basement and Mezzanine



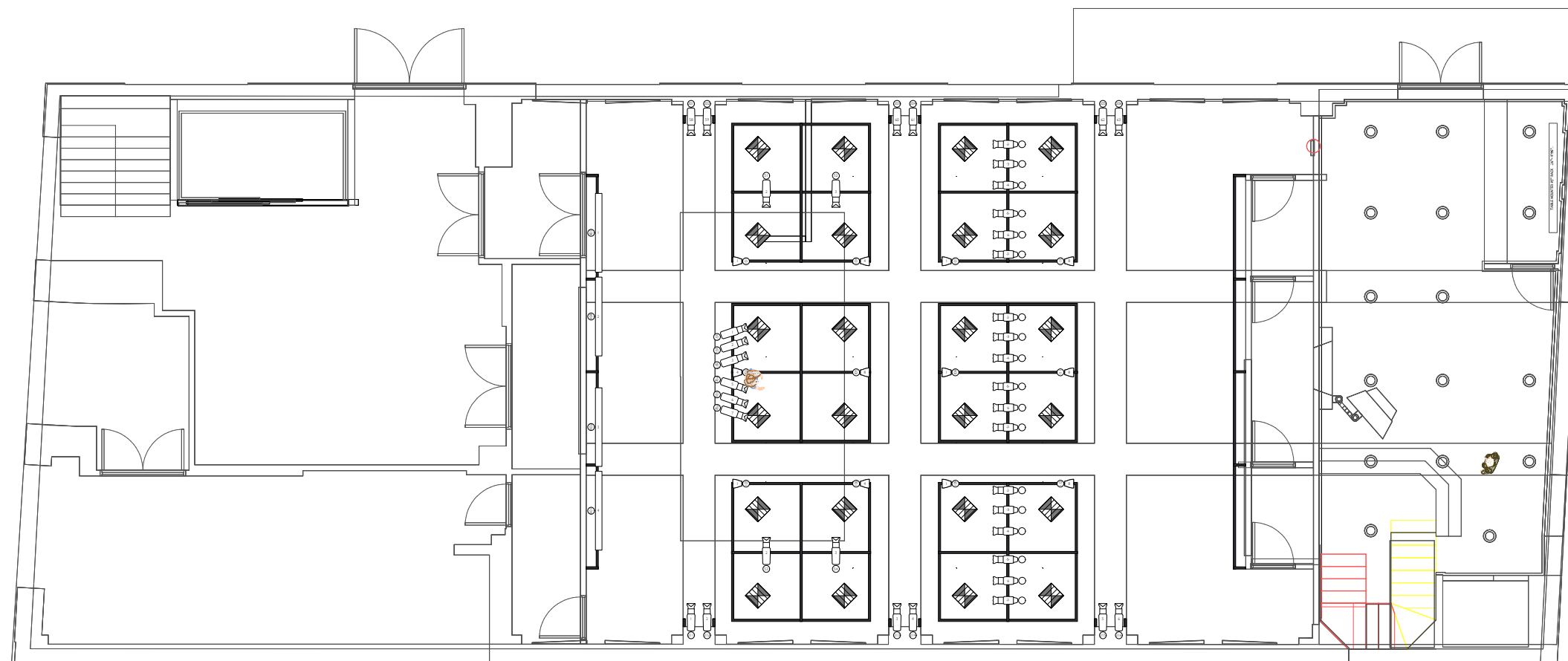
DEPARTMENT LEGEND:

- LOBBY / PUBLIC SPACE
- PERFORMANCE SPACE
- LOADING / STAGING SPACE
- COMPANY SUPPORT
- TECHNICAL SUPPORT
- CIRCULATION

UNION BANK BUILDING UPDATED SECTIONS

LIGHTING SYSTEMS

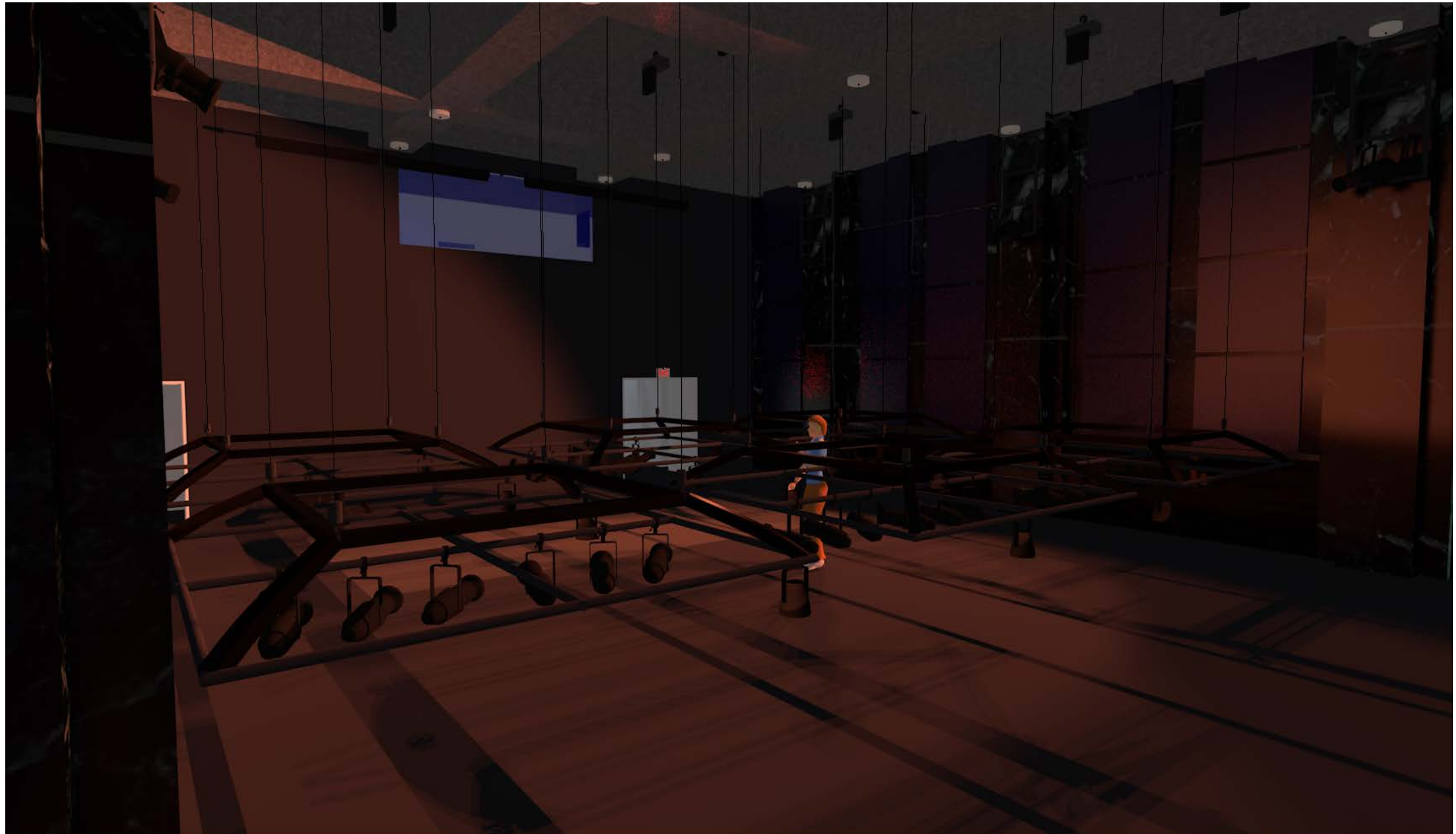
The use of lighting grid pods create a flexible and easy way for students to hang lighting equipment without the fear and danger of climbing up a ladder with fixtures in their hands. While a ladder would still be required for focus, it will allow more complex lighting designs to be attainable to students who are less experienced. It will also allow for quicker load in/strikes to support the large amount of shows that the student body puts up and the space is capable of supporting.



2 Lighting 1
Scale: 1/4" = 1'-0"

| Symbol Key | |
|------------|---------------------------------------|
| | Chroma Q Color Force 72 @ 720w |
| | ETC ColorSource PAR Medium Oval @ 90w |
| | ETC Source4 36deg @ 575w |
| | ETC Source4 LEDLS 50deg @ 117w |

LIGHTING SYSTEM (LOWERED POSITION)



PERFORMANCE SPACE RENDERINGS

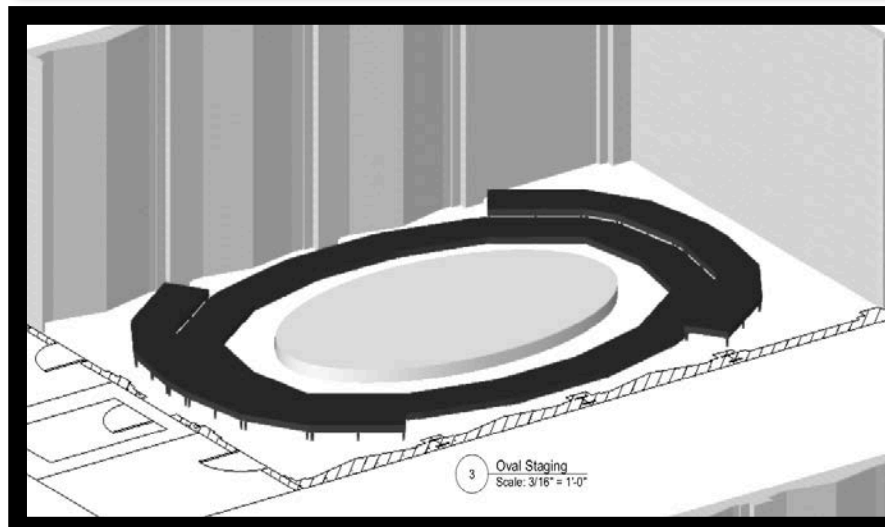
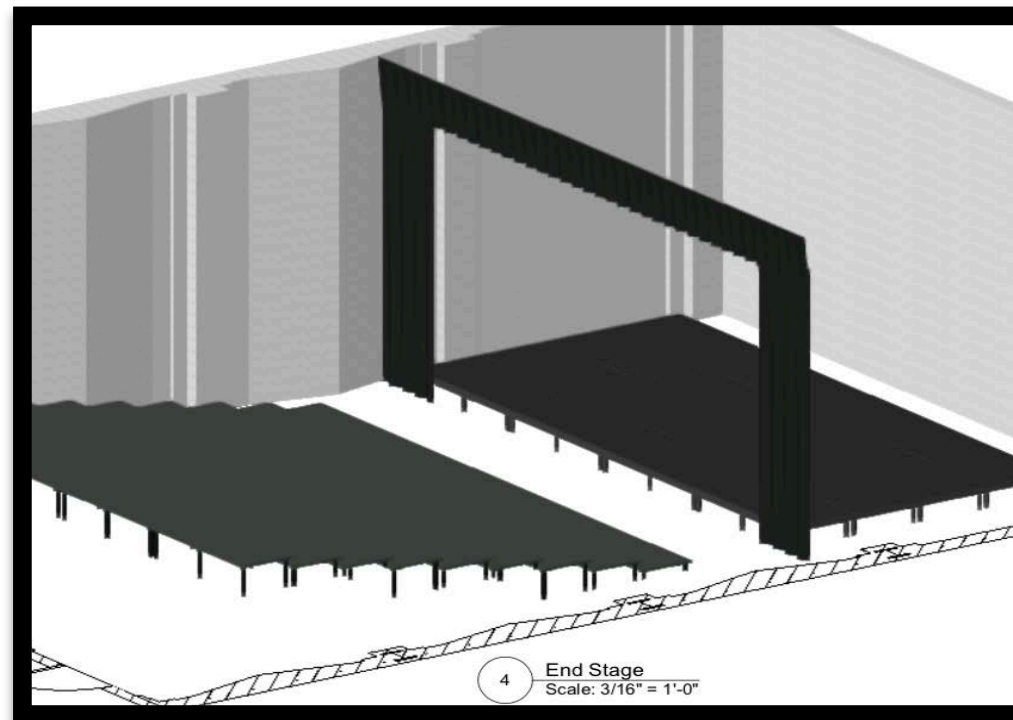
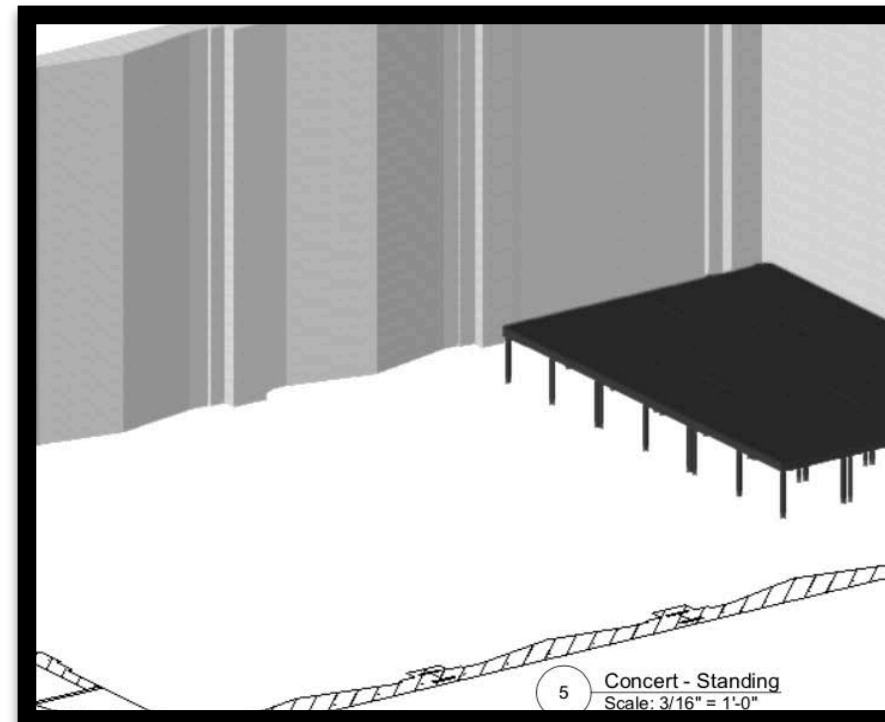
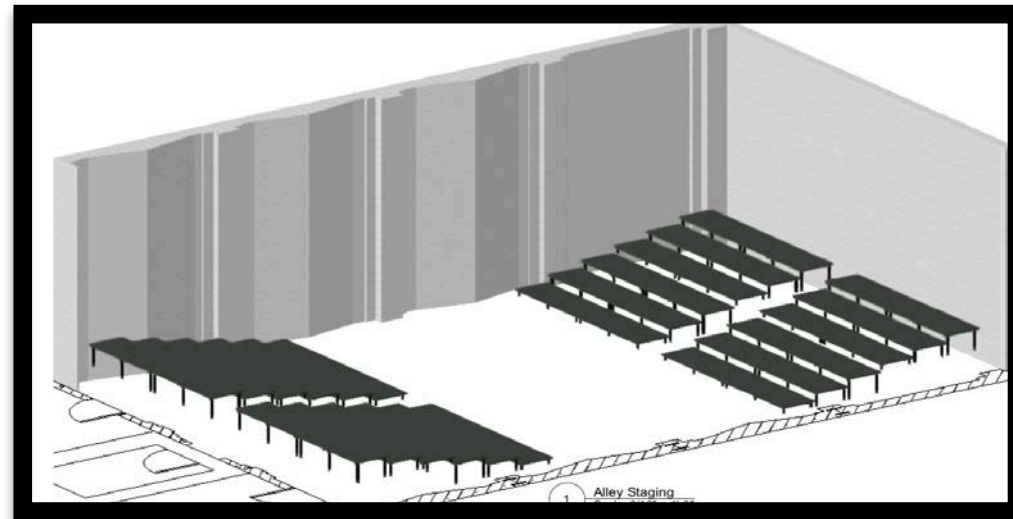
1. Audience View of space in End-Stage configuration
2. High view of space in End-Stage configuration
3. View from backstage entrance of theater



AUDIENCE EXPERIENCE VIEWS

1. Computer rendered lobby interior
2. Hand rendered view of theater entrance





PROGRAM LAYOUT CONCEPTS

The Space is designed to allow a myriad of different staging options.

PROGRAM LAYOUTS | ALLEY STAGING



PROGRAM LAYOUTS | END STAGE STAGING

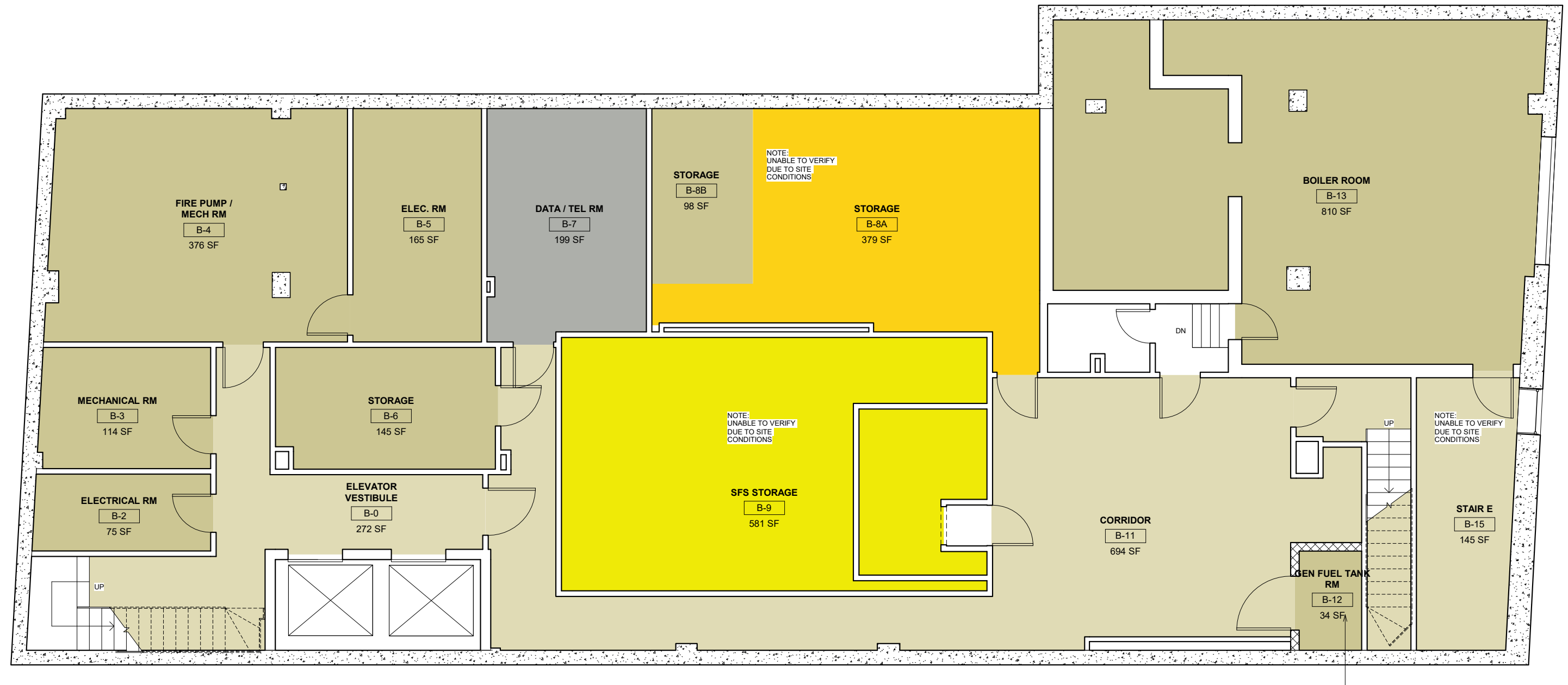


PROGRAM LAYOUTS | CONCERT STAGING

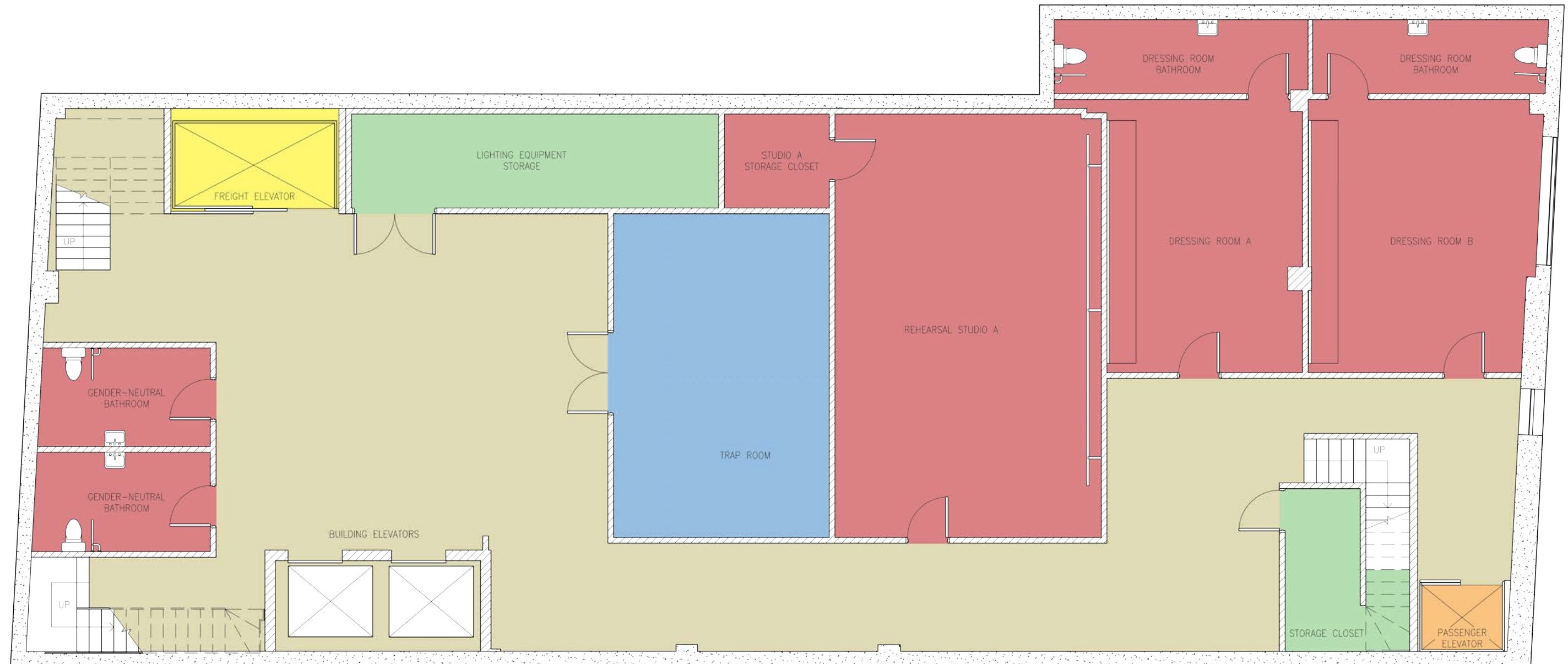


PROGRAM LAYOUTS | IN-THE-ROUND STAGING





UNION BANK BUILDING BASEMENT (BEFORE)

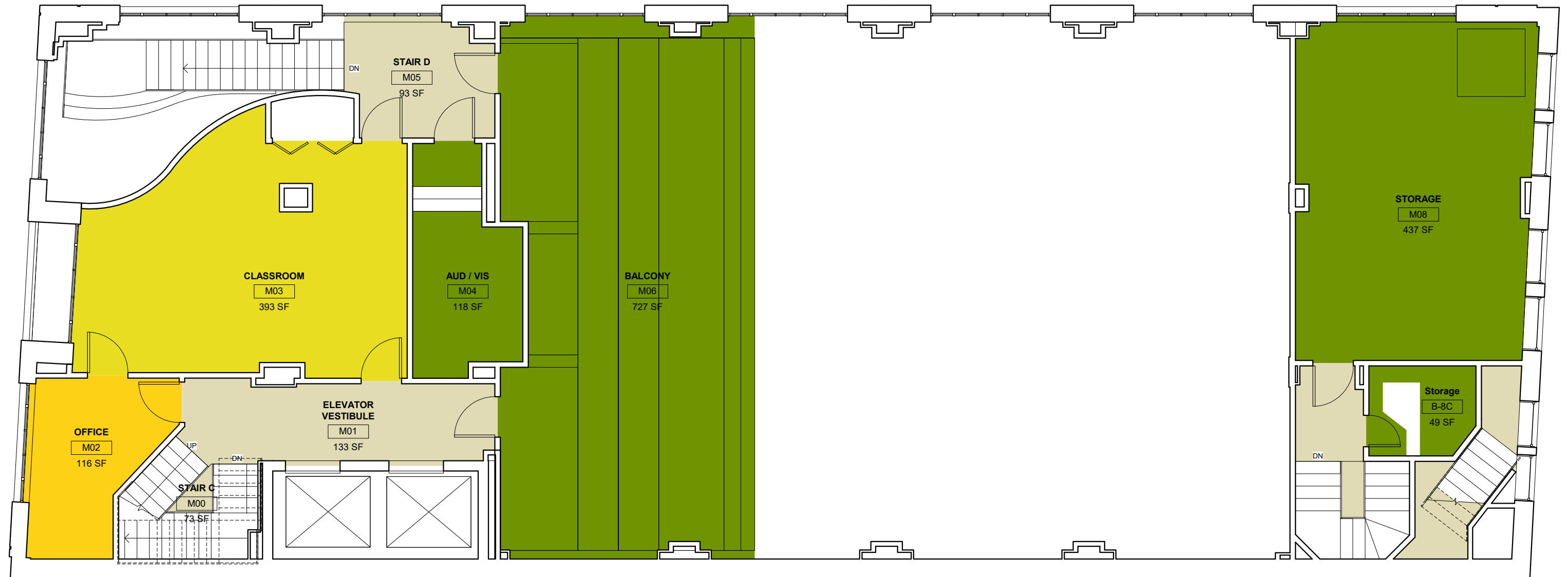


DEPARTMENT LEGEND:

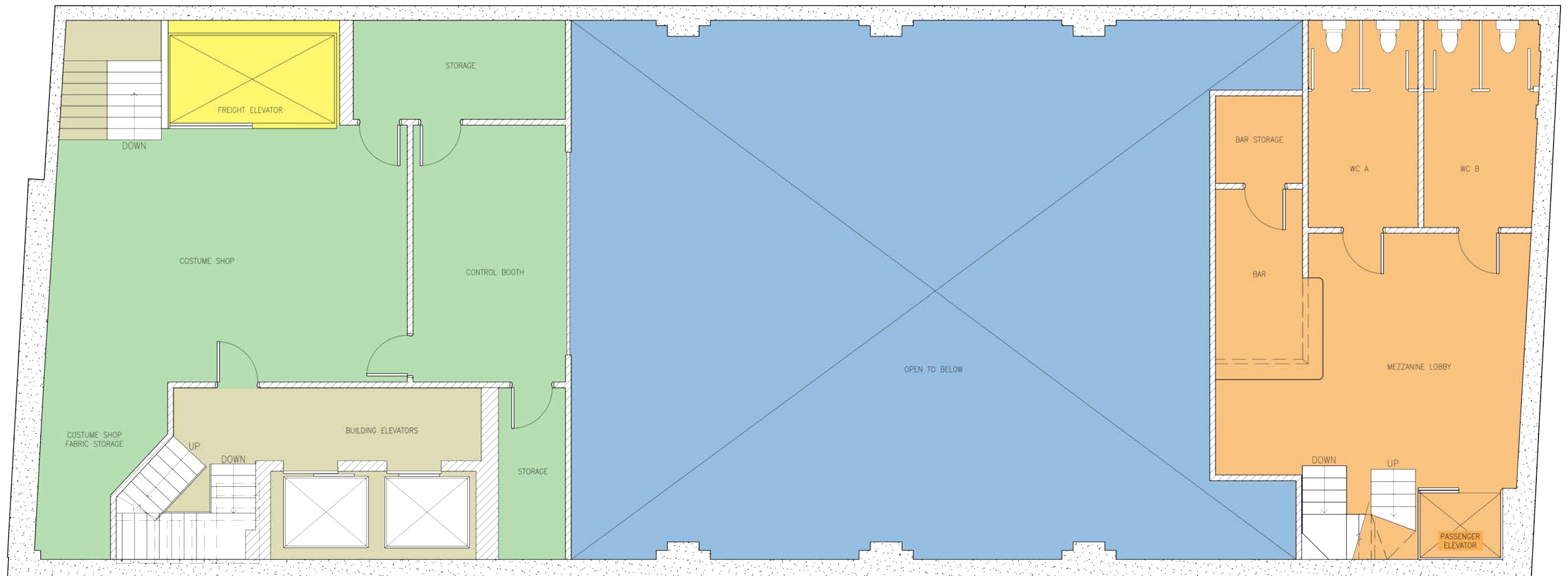
- LOBBY / PUBLIC SPACE
- PERFORMANCE SPACE
- LOADING / STAGING SPACE
- COMPANY SUPPORT
- TECHNICAL SUPPORT
- CIRCULATION

UNION BANK BUILDING BASEMENT (AFTER)

- Two multi person dressing rooms with makeup counters and full use bathrooms
- 619 Square foot rehearsal space with mirror wall and dance bar
- Lighting Equipment Storage area
- Two All gender bathrooms
- 384 square foot trap room
- Freight, building and passenger elevator accessible



UNION BANK BUILDING MEZZANINE (BEFORE)



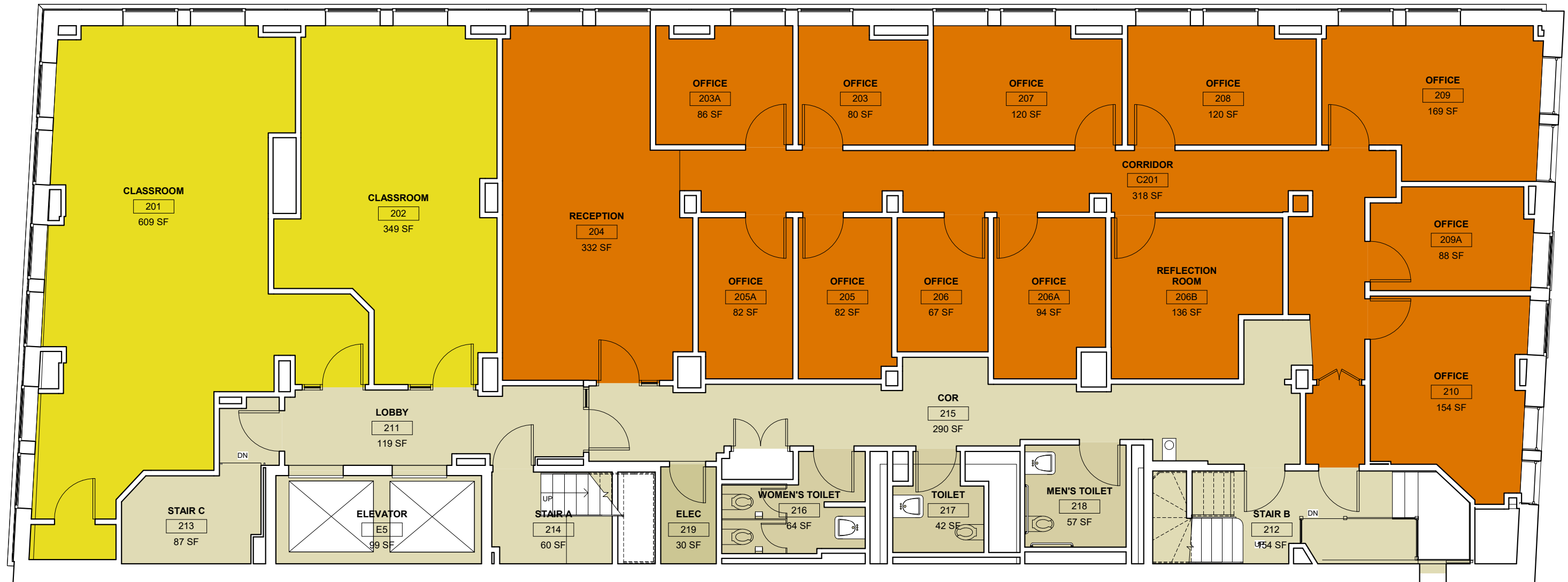
UNION BANK BUILDING MEZZANINE (AFTER)

DEPARTMENT LEGEND:

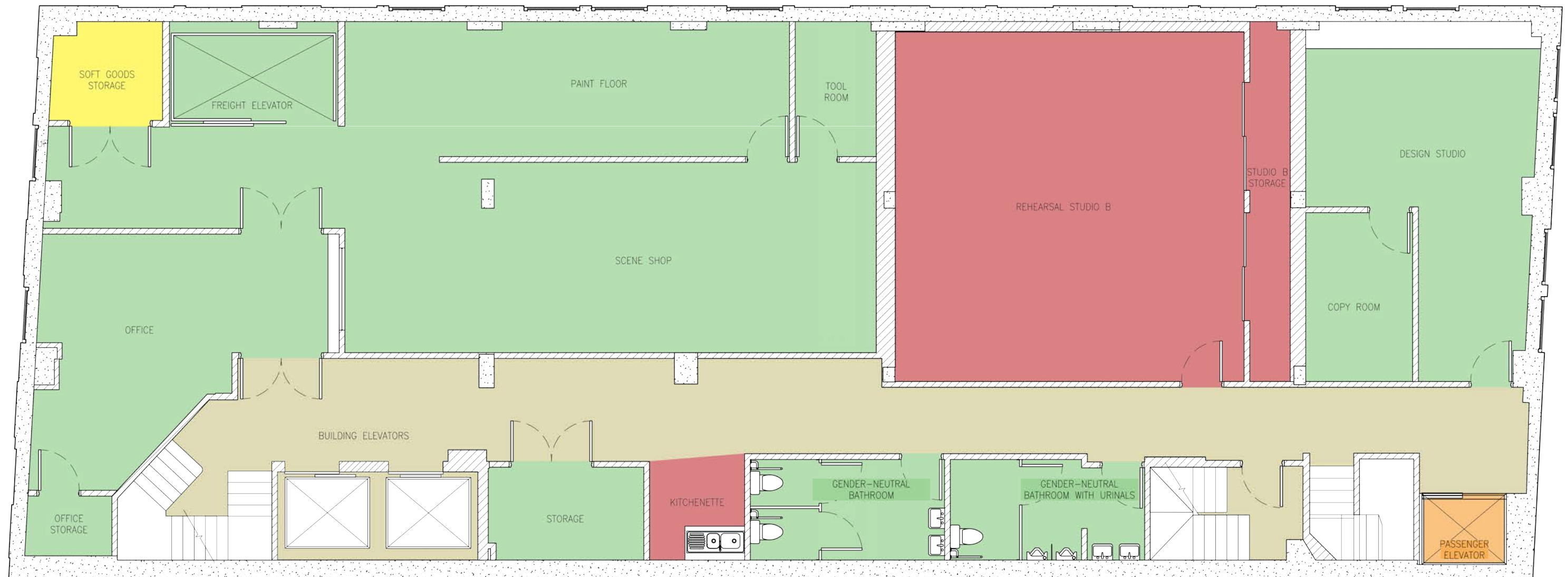
- LOBBY / PUBLIC SPACE
- PERFORMANCE SPACE
- LOADING / STAGING SPACE
- COMPANY SUPPORT
- TECHNICAL SUPPORT
- CIRCULATION

- 583 Square foot Costume shop with fabric storage
- Updated control booth with storage

- Patron lobby with Bar
- Two Multi stall bathrooms
- Freight, building, and passenger elevator accessible



UNION BANK BUILDING SECOND FLOOR (BEFORE)



DEPARTMENT LEGEND:

- LOBBY / PUBLIC SPACE
- PERFORMANCE SPACE
- LOADING / STAGING SPACE
- COMPANY SUPPORT
- TECHNICAL SUPPORT
- CIRCULATION

UNION BANK BUILDING SECOND FLOOR (AFTER)

- 537 Square foot Scene Shop
- 256 Square foot Paint Shop
- Tool Storage Room
- 666 Square foot Rehearsal Studio with mirror wall and dance bar
- Two gender neutral multi-person bathrooms
- 302 Square Foot Office with storage
- 335 Square foot Design Studio
- Copy and Materials Room
- Kitchenette area with sink, microwave and full sized fridge
- Freight, building, and passenger elevator

| Rm Code | Space/ Name | GSF | Occupancy | Notes |
|----------|------------------------------|-------------|-----------|---|
| A | Lobby /Public Space | | | Floor 1 & M |
| A101 | Lobby | 444 | 80 | |
| A102 | Will Call/Coat Check | 50 | | |
| A103 | Patron Entry | 152 | | Entry into theater space |
| A104 | Elevator - Floor 1 | 29 | | Elevator for Floors 1 - 3 only |
| | | | | |
| AM01 | Lobby Floor 2 | 329 | 80 | Space entry is located in A101 |
| AM02 | Bar | 81 | | Apart of lobby floor 2 |
| AM03 | All-Gender Bathroom A | 125 | | 2 Toilets, 2 Sinks |
| AM04 | All-Gender Bathroom B | 128 | | 2 Toilets, 2 Sinks |
| AM05 | Bar Storage | 42 | | Within AM01 |
| AM06 | Elevator - Floor 2 | 29 | | Elevator for Floors 1 - 3 only |
| | | 1409 | | |
| | | | | |
| B | Performance Space | | | |
| BB01 | Trap Room | 384 | | |
| | | | | |
| B101 | Theatre | 1923 | 80 | Uses Floor 1 & M Level |
| | | 2307 | | |
| | | | | |
| C | Loading/Staging Space | | | |
| C101 | Load-in Entry | 68 | | Large Loading doors from sidewalk open to Support Shop E105 |
| C102 | Freight Elevator | 79 | | Open area accessible from load-in Entry, reaches B, 1, M, & 2 |
| C103 | Theater Storage | 75 | | Storage closet connected to Support Shop (E105) and is used for seating, risers, and tables for theater space |
| C104 | N. Vestibule | 71 | | |
| C105 | S. Vestibule | 62 | | |
| | | | | |
| C201 | Soft Goods Storage | 58 | | |
| | | 413 | | |
| | | | | |
| D | Company Support | | | |
| DB01 | Dressing Room A | 294 | | |
| DB02 | Dressing Room A Bathroom | 103 | | Within DB01 - one toilet, one sink |
| DB03 | Dressing Room B | 338 | | |

| | | | |
|------|----------------------------------|------|---|
| D | Company Support Cont. | | |
| DB04 | Dressing Room B Bathroom | 96 | Within DB03 - one toilet, one sink |
| DB05 | All-Gender Bathroom A | 92 | One toilet, one sink |
| DB06 | All-Gender Bathroom B | 96 | One toilet, one sink |
| DB07 | Rehearsal Studio A | 619 | |
| DB08 | Studio A Closet | 54 | Within DB07 |
| | | | |
| D201 | Rehearsal Studio B | 666 | |
| D202 | Studio B Closet | 85 | |
| D203 | Kitchenette | 53 | One Sink, one microwave, one full-sized refrigerator. |
| | | 2496 | |
| E | Technical Support | | |
| EB01 | Lighting Storage | 190 | Room designed to fit multiple lighting "meat racks" |
| EB02 | General Storage | 95 | |
| | | | |
| E101 | Backstage Support Space | 420 | This space is connected to Theater as well as Load-in Entry |
| | | | |
| EM01 | Costume Shop | 488 | Freight Elevator, Storage & Control Room opens into this room |
| EM02 | Costume Shop Fabric Storage | 95 | A part of EM02 |
| EM03 | Control room | 214 | Large window between Control Room and Theater for stage management and control operators |
| EM04 | Storage | 115 | Can contain dimmer and other rack equipment that leads into theater space and also control room |
| EM05 | Storage | 63 | |
| | | | |
| E201 | Scene Shop | 537 | |
| E202 | Paint Shop | 256 | |
| E203 | Tool Room | 60 | |
| E204 | Office | 302 | |
| E205 | Office Storage | 28 | |
| E206 | Design Studio | 335 | |
| E207 | Copy Room | 99 | |
| E208 | General Storage | 78 | |
| E209 | All-Gender Bathroom | 107 | 2 toilets, 2 sinks |
| E210 | All-Gender Bathroom with Urinals | 104 | 1 toilets, 2 urinals, 2 sinks |
| | | 3586 | |